

Prepared by	Effy Mitchell	Date - 26/01	
Location Details	Abandoned factory and train tracks.		
Scene/Purpose of filming	Location management project.		

Location Recce Report

Site Contact Name	Address
<p>The Hawthorn Leslie Owned by A&P Group</p> <p>Pelaw metro tracks owned by Gateshead council.</p>	<p>Ellison Street , Hebburn.</p> <p>Pelaw , metro tracks off of station road.</p>
Contact info	
<p>Hawthorn Leslie:</p> <p>Emma - Media and press for A&P</p> <p>Tel: 0191 430 8600</p> <p>Pelaw Train tracks:</p> <p>Gateshead county council - Communications department</p> <p>Tel: 0191 433 2072 or 433 2193</p>	

Permissions	Permission from owners of both sites will have to be obtained.	Access	<p>Easy access to factory via main gate which A&P have access too.</p> <p>Train tracks are open to the public currently, however here is a steep slope down to them meant which could be effected by weather.</p>
		Electricity Supply	None, will have to bring battery operated / fully charged equipment.
Availability	If permission is obtained availability won't be an issue as these buildings are abandoned but will have to be arranged with the owners of the site.	Food	<p>Both locations are 10 minutes walking from local shops / catering can also be provided / brought with us.</p> <p>More details to be provided on call sheets.</p>
		Parking	Nearby parking as both locations are in suburban areas on roads.
Points of Interest	Roof of building, outdoor areas near the river, stair well and tunnel near train tracks.	Toilets	10 minutes away from public toilets.
		Sunlight	Dependent on weather location has lots of natural light. Filming at night could be an issue and will need according planning.
Suitability/	Roof shots, use of many rooms in factory and stair well.	Windows	Many windows / open areas in the Hawthorn Leslie as well as rooms with blocked windows and no light.

Possible shots	Outdoor areas with lots of natural light.		Train tracks are open air.
		Flooring/ ground	Ground is unstable in some rooms but we will not film in those areas and will have someone on cable watch whilst filming in the building as well as cordoning off certain areas as to avoid any accidents.
Safety Issues	Certain parts of building we will need to stay out of due to lack of stability these areas are pretty obvious to spot, low light, steep hill down to train tracks.	Noise	Due to abandoned location and size of the Hawthorn Leslie very little noise pollution. Road nearby is suburban and quiet. Similarly the train tracks back onto forest and quiet suburban roads and are out of the view of the public.
		Space	Lots of space in both locations.

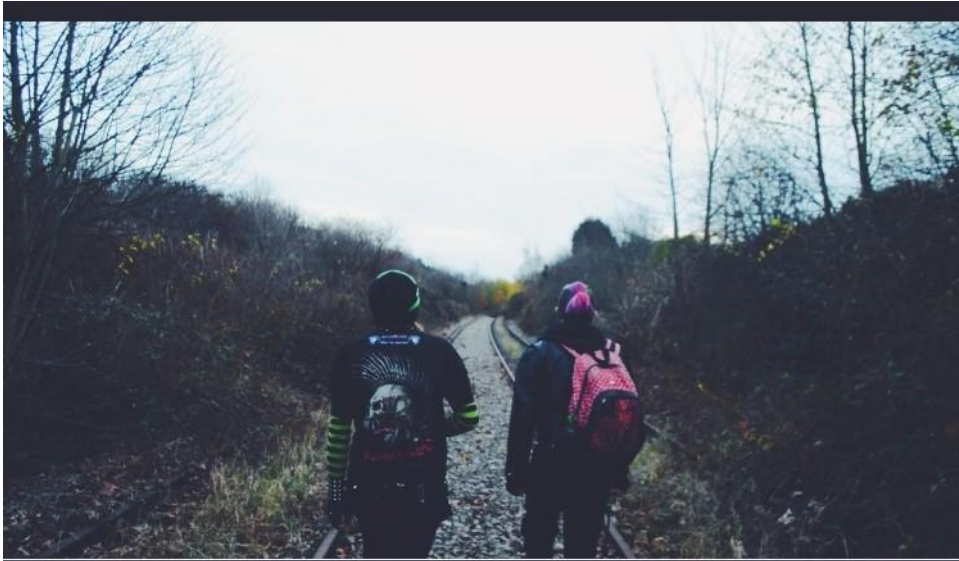
Photos of locations

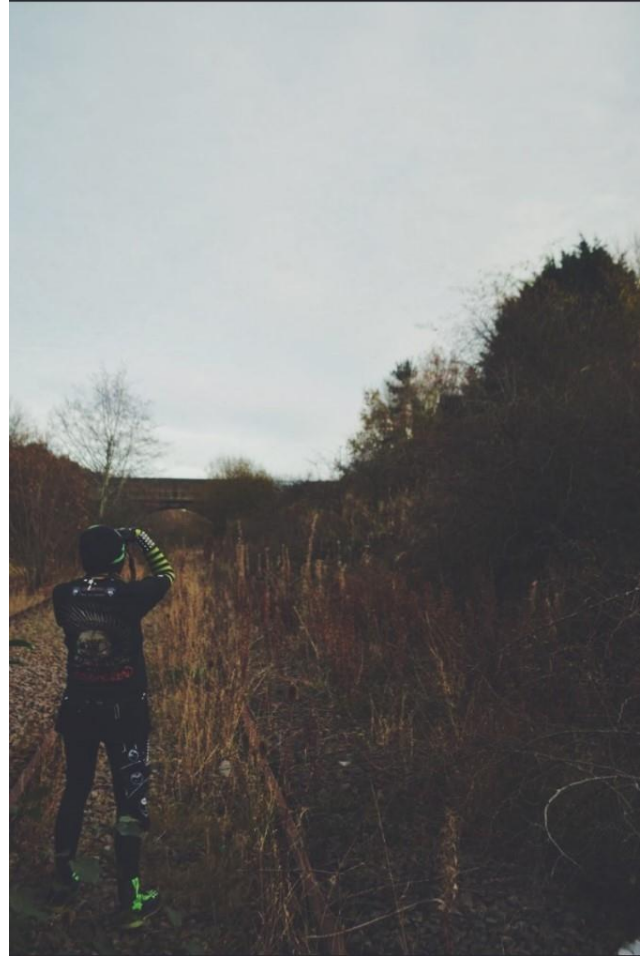
Location 1
Hawthorn Leslie, Hebburn.





Location 2
Pelaw, Abandoned Train tracks.







Interior Location

Hawthorn Leslie as ' paper street mill '

Fight Club

Page's 38-39

EXT. PAPER STREET - NIGHT

A street sign: "PAPER STREET". An abandoned PAPER MILL sits on one side and only ONE HOUSE on the other, the rest of the land being undeveloped grass and weeds. It's an old, grand, three-story gone to seed. It looks abandoned, too.

39.

INT. PAPER ST. HOUSE - LIVING ROOM -SAME

Tyler leads Jack up a staircase to a 2ND FLOOR LANDING, then opens the door to a room.

INT. ROOM - CONTINUOUS

Jack steps into the room, sits down on the old bed. It CREAKS. Dust drifts upward.

JACK (V.O.)

I don't know how Tyler found the house. He'd been there for half a year. It was waiting for re-zoning or something.

CUT TO:



Paper street mill - Fight Club



Hawthorn Leslie - Our location



Exterior location

Pelew train tracks

Life is Strange, before the storm.

Episode 2, Out Of time.

Max: I know she must be as cool as you are. I have no doubt we'll meet soon.

Chloe: Railroad tracks always make me feel better...I have no idea why...

Max: Kerouac knew. It's the romance of travel and movement...the sound of the train whistle at night...

Chloe: Look at the beat poet here.

Max: I'd rather be a good photographer...

Chloe: You are. You just have to stop being afraid...

Max gets up to take a picture of the sunset.

Max (thinking): *Perfect...*

Max holds her head in her hand as the flashing visions of the tornado return.

Chloe: Max! Max?! Help! I'm stuck!

Max: Hold on, Chloe!

Max grabs Chloe's hands and tries to pull her up from the tracks but it doesn't work.

Max (thinking): *What's that noise? The train...oh, shit!*

There are two ways Max can free Chloe.

Max can take the crowbar and use it on the wedge blocking the cable drum, but it will damage the train tracks.

Max can take the crowbar, open the door with it, take the pliers, and use them on the red wire in the fuse box.

Max: You okay?

Chloe: You saved me again! Crazy... Now we're totally bonded for life!

Max: Damn, that was close.

Chloe: Aren't you glad I took you away to a nice quiet, desolate spot?

Chloe and Max hug as they walk back along the tracks.

Max: It was cool to spend time in your lair, but...I have to get back to school before my next class...

Chloe: Since you're the mysterious superhero, I'll be your faithful chauffeur and companion.

Max: My powers might not last, Chloe...

Chloe: That's okay. We will...forever.

Chloe drives Max to the entrance of Blackwell. The weather has begun to get rainy.



**Life is strange - Train
Tracks**



**Pelaw - Abandoned metro
tracks**



SWOT Analysis

Location 1

Interior

Abandoned Factory

The Hawthorn Leslie.

Strengths: Look, Minimal set dressing/building needed, location is free and easy to access and provides multiple locations within and outside of the building to film.

Weaknesses: Some areas of the building are derelict since its abandoned which makes them unsafe to film in, the building has no working lights so especially at night the building is more dangerous.

Threats: Areas of the building are derelict and lead off to huge drops which could be dangerous. Weather can drastically effect the lighting / overall set due to holes in the ceiling etc.

Opportunities: To work in an interesting space and not have to build a set. We could use natural lighting / unusual lighting set ups to our advantage to create creative lighting design.

Overall I think this location would be appropriate due the paper mill house in the script being described as abandoned and the only house on the street, which the Hawthorn Leslie is. It fits the description of ' odd and grand' as well being a huge building with plenty of space for crew, cast and other scenes within the script. It fits the washed out blue / green color scheme of the film too being an old ship yard the building has an industrial feel which fits in with the mechanical nature of project mayhem.

Location 2

Exterior

Abandoned Train Tracks

Pelaw out of use metro tracks.

Strengths: Unique very quiet and free outdoor location. Lots of space for crew / diverse shots.

Weaknesses: There is a slope to get to the tracks which if we are not careful with especially if its wet could slip down.

Threats: Low light, the train tracks will be in complete darkness once the sun sets. The train tracks themselves are very slippery when wet.

Opportunities: Unusual filming location, no noise pollution / risk of running into large amounts of people. Lots of space and range of places to shoot as tracks run for miles.

Overall this location would be appropriate due to it being out of use train tracks which would mean safety is insured for all the cast and crew. Real train tracks would look best and since they go on for a couple of miles there's no threat of noise from nearby trains or road traffic. It also gives the crew options if they would like to have the train tracks scene be nearer town or further into the wilderness.